



HI-MACS®

 LG Hausys



PROJECT CLEARANCE

Effective as of 9 March 2020



Natural Acrylic Stone



LUXX NEWHOUSE GROUP

What is HI-MACS[®]?

An outstanding material.

HI-MACS[®] is a delicate composition of acrylic, minerals and natural pigments that combine to create a smooth, non porous, thermoformable and visually seamless surface.

The material meets the highest standards for quality in all respects: material performance, fabrication, functionality and hygiene. Thanks to these qualities and the outstanding flexibility in fabrication and design, HI-MACS[®] offers countless advantages over conventional materials.

And an ongoing inspiration.

We have gathered a number of projects here, all of which are capable of inspiring and creating a desire to tread new paths.

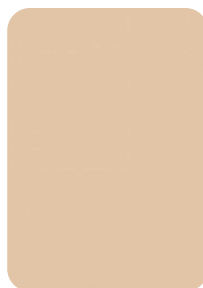
HI-MACS[®]. Because Quality Wins.



PROJECT CLEARANCE

Group One

HI-MACS creates visual, statement features in the trendiest of bars, most upmarket of restaurants and the most happening clubs. Especially for internationally operating hospitality chains it is good to know that LG Hausys offers a global after sales service with their network partners.



S004 Apricot
Thickness: 12 mm



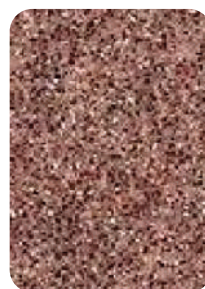
S101 Jasmin Green
Thickness: 12mm



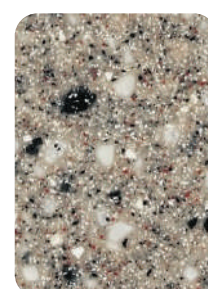
S215 Magenta Red
Thickness: 12 mm



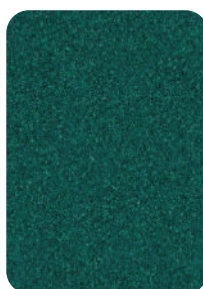
G003 Strawberry Sand
Thickness: 12 mm



G013 Rose Sand
Thickness: 12mm



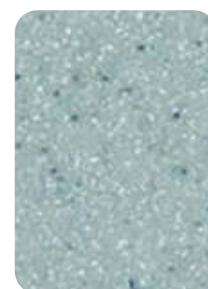
G018 Rose Granite
Thickness: 12mm



G021 Ocean Pearl
Thickness: 12mm



G023 Natural Granite
Thickness: 12mm



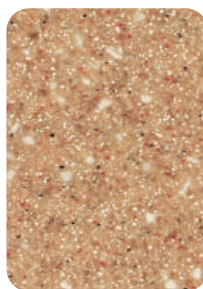
G027 Turquoise Sand
Thickness: 12mm

Anti bacterial
Seamless finish
Non porous
Minimal maintenance
Stain Resistance
Chemical Resistance
10 Years Limited Warranty

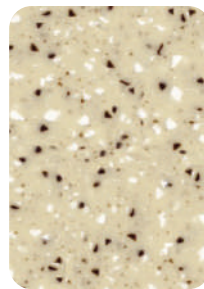
PROJECT CLEARANCE

Group One

HI-MACS creates visual, statement features in the trendiest of bars, most upmarket of restaurants and the most happening clubs. Especially for internationally operating hospitality chains it is good to know that LG Hausys offers a global after sales service with their network partners.



G029 Terra Quartz
Thickness: 12 mm



G030 Ivory Quartz
Thickness: 12 mm



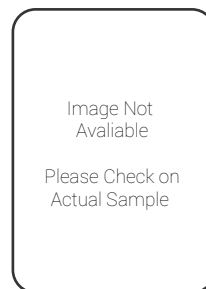
G032 Steel Sand
Thickness: 12 mm



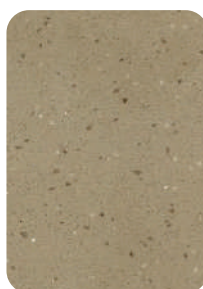
G067 Snow Field
Thickness: 12 mm



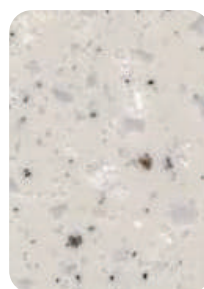
G279 Masian Beach
Thickness: 12mm



G284 Luxx Beige
Thickness: 12mm



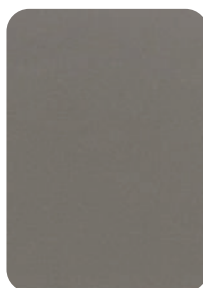
G133 Cinnamon
Thickness: 12mm



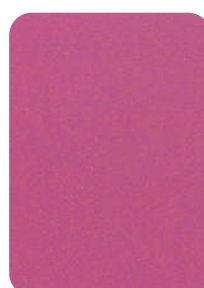
G227 Gray Crystal Quartz
Thickness: 12mm



P100 Key Lime
Thickness: 12mm



P102 Kold Silver
Thickness: 12mm



P103 Kandy Pink
Thickness: 12mm

Anti bacterial
Seamless finish
Non porous
Minimal maintenance
Stain Resistance
Chemical Resistance
10 Years Limited Warranty

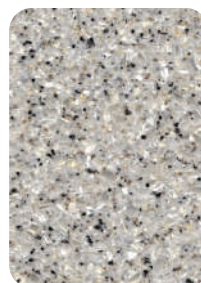
PROJECT CLEARANCE

Group Two

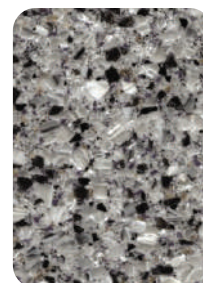
HI-MACS creates visual, statement features in the trendiest of bars, most upmarket of restaurants and the most happening clubs. Especially for internationally operating hospitality chains it is good to know that LG Hausys offers a global after sales service with their network partners.



VA02 Trindale
Thickness: 12mm



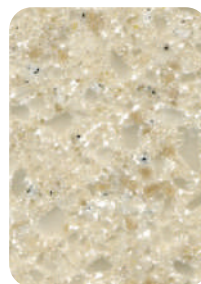
VA21 Pinnacles
Thickness: 12mm



VA23 Vaesuvo
Thickness: 12mm



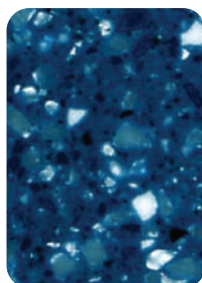
VB21 Taos
Thickness: 12mm



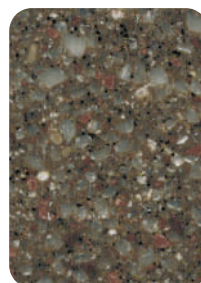
VA02 Mikenno
Thickness: 12mm



VG22 Basil
Thickness: 12mm



VL01 Caldera
Thickness: 12mm



VN02 Latte
Thickness: 12mm

Anti bacterial
Seamless finish
Non porous
Minimal maintenance
Stain Resistance
Chemical Resistance
10 Years Limited Warranty

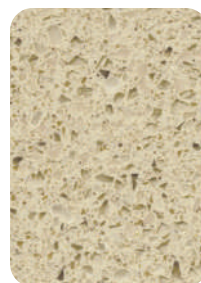
PROJECT CLEARANCE

Group Two

HI-MACS creates visual, statement features in the trendiest of bars, most upmarket of restaurants and the most happening clubs. Especially for internationally operating hospitality chains it is good to know that LG Hausys offers a global after sales service with their network partners.



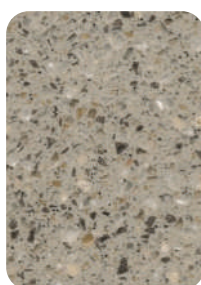
T002 Uranus
Thickness: 12mm



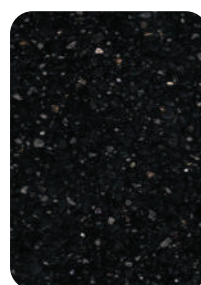
T003 Mercury
Thickness: 12mm



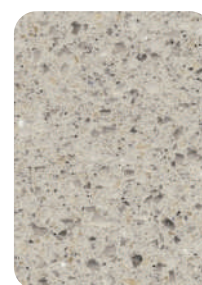
T006 Cornet
Thickness: 12mm



T012 Eclipse
Thickness: 12mm



T013 Pluto
Thickness: 12mm



T014 Phobos
Thickness: 12mm



T022 Sirius
Thickness: 12mm

Anti bacterial
Seamless finish
Non porous
Minimal maintenance
Stain Resistance
Chemical Resistance
10 Years Limited Warranty

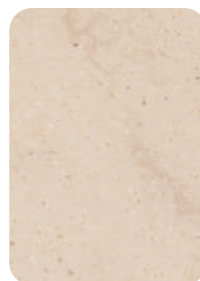
PROJECT CLEARANCE

Group Two

HI-MACS creates visual, statement features in the trendiest of bars, most upmarket of restaurants and the most happening clubs. Especially for internationally operating hospitality chains it is good to know that LG Hausys offers a global after sales service with their network partners.



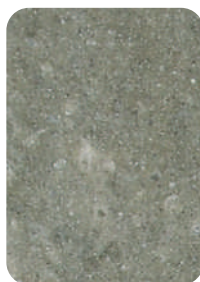
M101 Torino
Thickness: 12mm



M103 Bologna
Thickness: 12mm



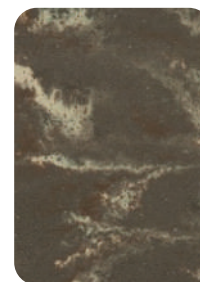
M104 Roma
Thickness: 12mm



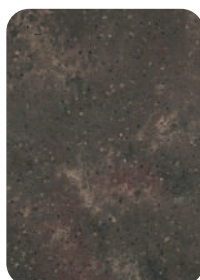
M202 Canossa
Thickness: 12mm



M205 Parma
Thickness: 12mm



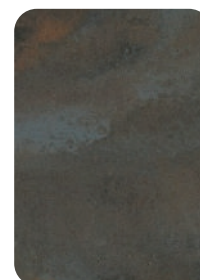
M301 Siena
Thickness: 12mm



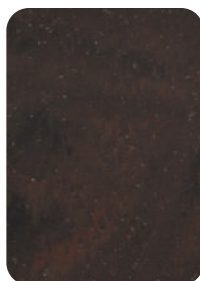
M302 Pompei
Thickness: 12mm



M105 Verona
Thickness: 12mm



M303 Capri
Thickness: 12mm



M304 Bari
Thickness: 12mm

Anti bacterial
Seamless finish
Non porous
Minimal maintenance
Stain Resistance
Chemical Resistance
10 Years Limited Warranty

BRINGING EXCELLENT DESIGN TO LIFE

Wide range of shapes

Every option is available to designers to create neat washrooms, kitchens, hospitals and much more with our wide range of HI-MACS sinks and bowls. Perfectly coordinated and ideal for mixing and matching, the bowls and sinks guarantee a modern look that is easy and simple to look after.

Dramatic translucency

Certain colours and thicknesses of HI-MACS exhibit a special translucency when exposed to light. Various textures and patterns can be built into the material to intensify the HI-MACS translucency effect.

3-Dimensional Design

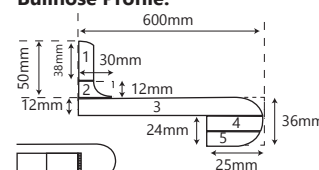
HI-MACS boasts a simple heating process and three-dimensional thermoplastic forming capabilities. This allows for greater forming flexibility compared with other conventional materials so that spectacular ideas can quickly take on a concrete shape.

Unlimited spectrum of colours

HI-MACS offers a virtually limitless range of colours in all conceivable shades. More are being added every year no matter what colour you choose. HI-MACS remains 100% homogeneous.

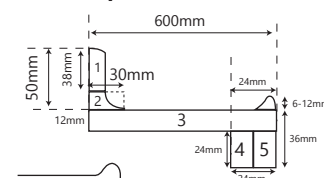
SLAB PROFILES

Bullnose Profile.



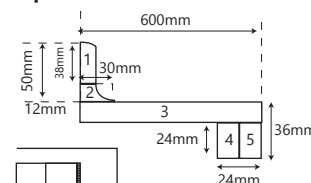
Total Material Required : 733mm (width)
Material width do not exceed 760mm

Non-Drip Profile.



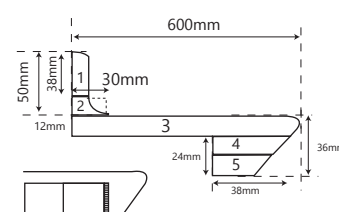
Total Material Required : 750mm (width)
Material width do not exceed 760mm

Square Profile.



Total Material Required : 731mm (width)
Material width do not exceed 760 x 3680mm

Sharp Nose Profile.



Total Material Required : 759mm (width)
Material width do not exceed 760mm